



# SUPERLINE PRO ® 6 DRAWER TOOL CABINET WITH BALL BEARING SLIDES

MODEL NO'S: **AP266G, AP266HV**

Thank you for purchasing a Sealey product. Manufactured to a high standard, this product will, if used according to these instructions, and properly maintained, give you years of trouble free performance.

**IMPORTANT:** PLEASE READ THESE INSTRUCTIONS CAREFULLY. NOTE THE SAFE OPERATIONAL REQUIREMENTS, WARNINGS & CAUTIONS. USE THE PRODUCT CORRECTLY AND WITH CARE FOR THE PURPOSE FOR WHICH IT IS INTENDED. FAILURE TO DO SO MAY CAUSE DAMAGE AND/OR PERSONAL INJURY AND WILL INVALIDATE THE WARRANTY. KEEP THESE INSTRUCTIONS SAFE FOR FUTURE USE.



Refer to  
instruction  
manual

## 1. SAFETY

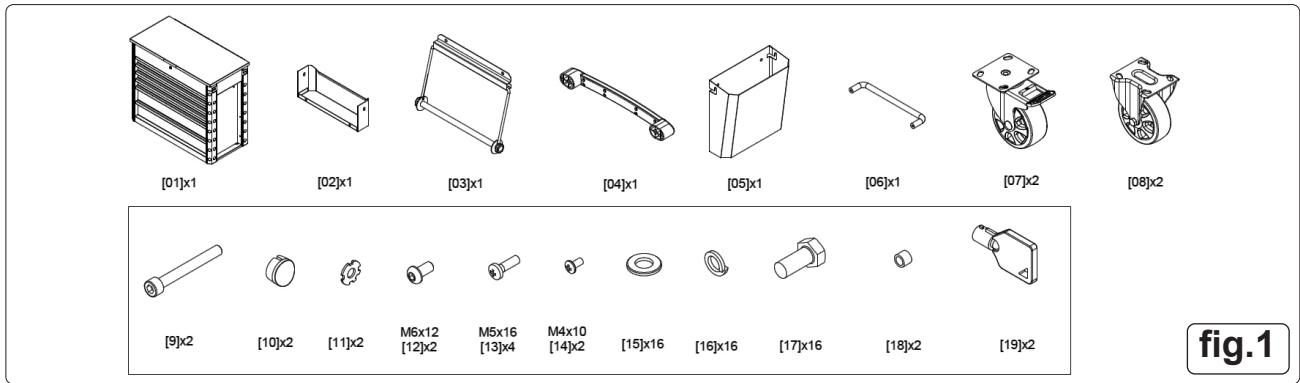
- ☐ **WARNING!** Ensure Health & Safety, local authority, and general workshop practice regulations are adhered to when using this Topchest & Rollcab combination.
- ✓ Locate the tool cabinet in a suitable working area.
- ✓ Keep the work area clean, uncluttered and ensure there is adequate lighting.
- ✓ Keep the tool cabinet clean and tidy in accordance with good workshop practice.
- ✓ Keep children and unauthorised persons away from the working area.
- \* **DO NOT** use the tool cabinet for any purpose other than that for which it is designed.
- \* **DO NOT** move the tool cabinet with drawers open.
- \* **DO NOT** open more than one drawer at the same time.
- \* **DO NOT** step on the drawers.
- \* **DO NOT** use in damp work areas.
- ☐ **WARNING!** The warnings, cautions and instructions referred to in this instruction manual cannot cover all possible conditions and situations that may occur. It must be understood that common sense and caution are factors which cannot be built into this product, but must be applied by the operator.

## 2. INTRODUCTION

Manufactured from double skin side walls. Full length locking bars secure all drawers when the lid is closed which can then be locked by the barrel lock supplied with two keys. Coated in high-gloss triple baked enamel for protection against oil, dirt and mild solvents. Full length TPR anti-shock protective bumpers on all corners prevent damage when moving around the workshop. Fitted with four stylish Ø5" x 2" castors, two fixed and two swivel with brakes and a durable shatterproof plastic side handle. Supplied with a can storage tray, waste bin and paper roll holder. Six soft close drawers each supplied with a cut-to-size non-slip liner. Deep storage compartment inside of the gas strut lid supplied with non-slip liner.

## 3. CONTENTS

Parts contents are listed as in fig.1

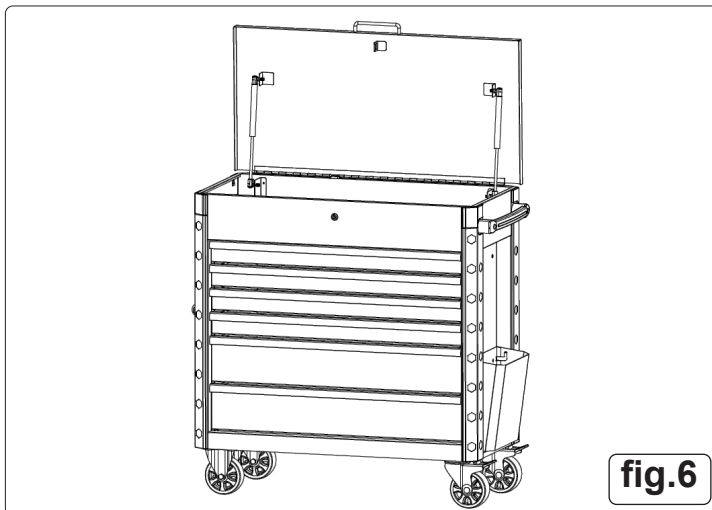
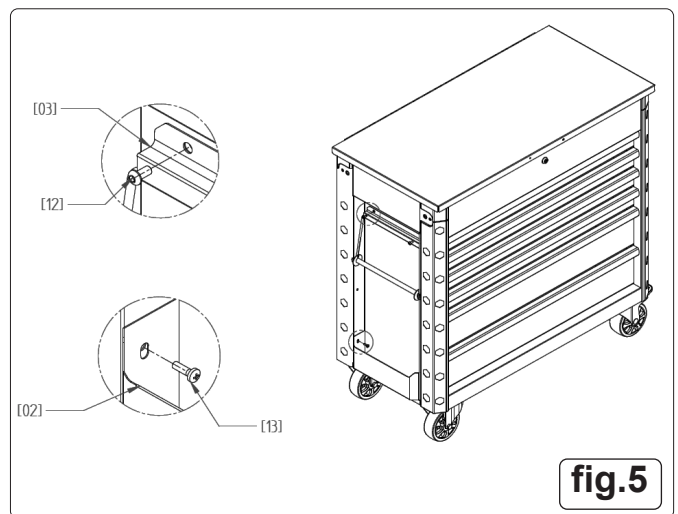
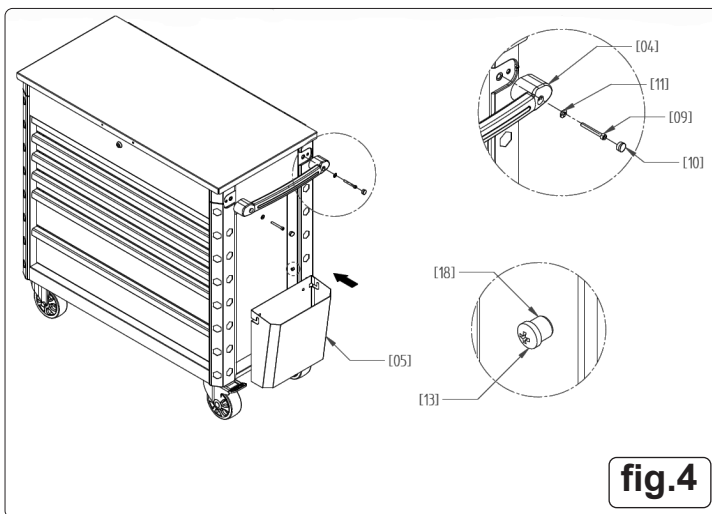
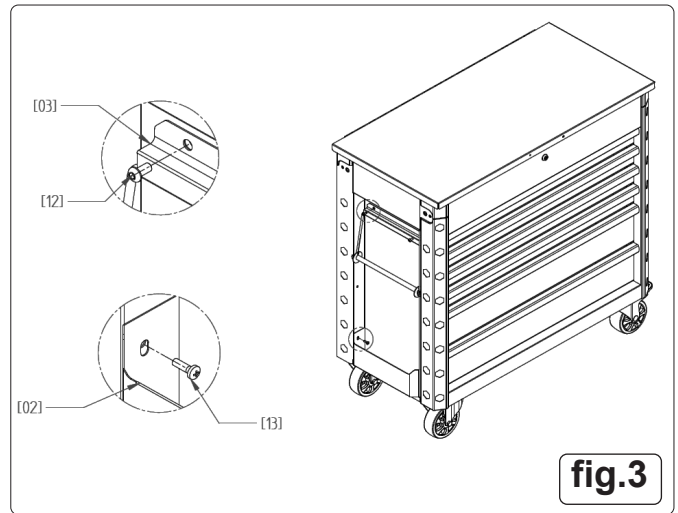
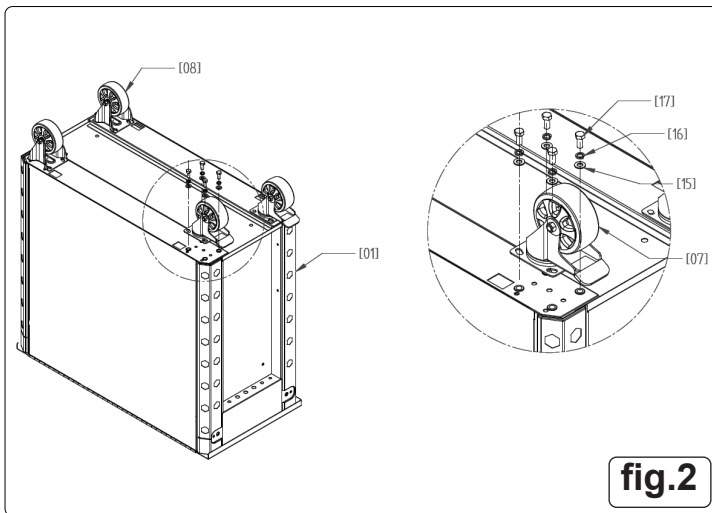


## 4. SPECIFICATION

Model No:	AP266G - HV
Nett Weight:	68kg
Overall Size:	722 x 482 x 1015mm
Medium Drawer (x4):	570 x 410 x 74.5mm
Large Drawer (x2):	570 x 410 x 153.5mm

## 5. ASSEMBLY

5.1. Numbers refer to fig.1



## 6. OPERATION

6.1. To lock the top chest, close all drawers, then insert one lock bar into the back slot inside the top compartment. Close the lid and lock with the key.

## 7. MAINTENANCE

- 7.1. Periodically lubricate the drawer slides.
- 7.2. Clean the surfaces with a soft cloth and a mild water/detergent solution.
- 7.3. Check all fixings and tighten if required.



#### ENVIRONMENT PROTECTION

Recycle unwanted materials instead of disposing of them as waste. All tools, accessories and packaging should be sorted, taken to a recycling centre and disposed of in a manner which is compatible with the environment. When the product becomes completely unserviceable and requires disposal, drain any fluids (if applicable) into approved containers and dispose of the product and fluids according to local regulations.

**Note:** It is our policy to continually improve products and as such we reserve the right to alter data, specifications and component parts without prior notice.

**Important:** No Liability is accepted for incorrect use of this product.

**Warranty:** Guarantee is 60 months from purchase date, proof of which is required for any claim.



REGISTER YOUR  
PURCHASE HERE

**Sealey Group, Kempson Way, Suffolk Business Park, Bury St Edmunds, Suffolk. IP32 7AR**



**01284 757500**



**sales@sealey.co.uk**



**www.sealey.co.uk**